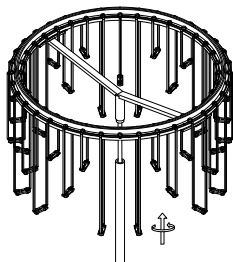


# NOVA LUCE

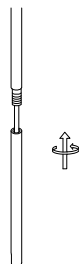
9186980

1



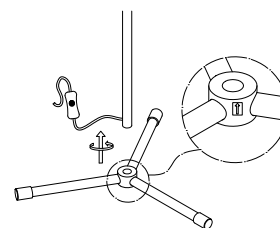
By rotating apply the top part

2



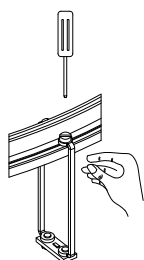
Attach the pipes by rotating

3



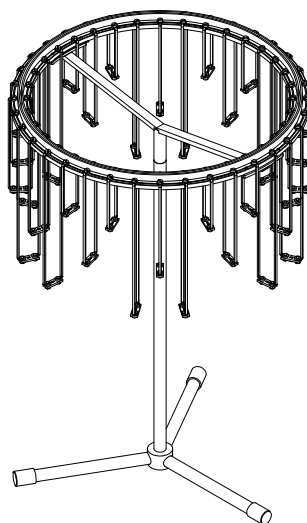
Assemble it with the Bottom part by rotating

4



Apply the screws

When the frames or LEDs are not straight, please Loosen one screw and straighten them by Hand, then tighten the screw.



A

This light fitting operates At a normal supply voltage Of 220-240V.

B

When changing the bulb or fuses, Always switch off at the mains and allow The old bulb to cool down before handling.

